

1-BEDROOM CLASSIC

**TYPE 1A**

Area 42 sqm / 452 sqft

**BLOCK 205**

Unit #02-04 to #12-04

**BLOCK 207**

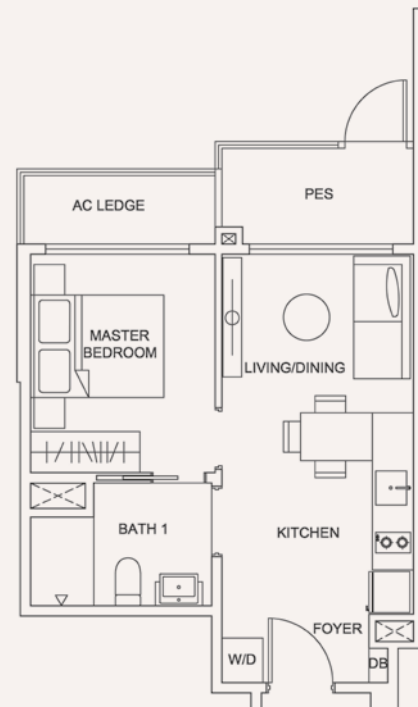
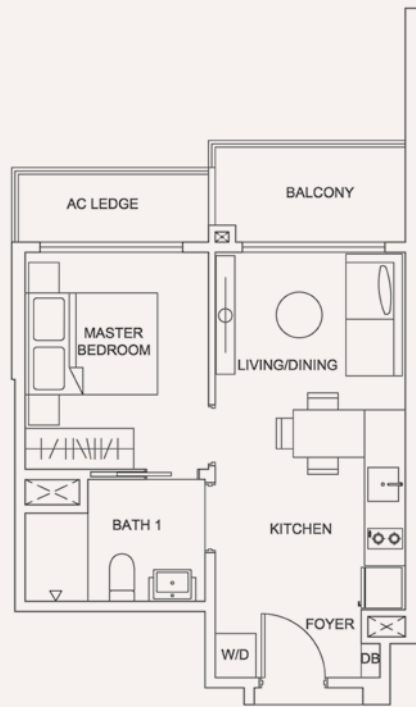
Unit #02-14 to #12-14

**TYPE 1Ap**

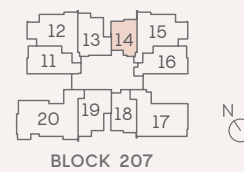
Area 42 sqm / 452 sqft

**BLOCK 207**

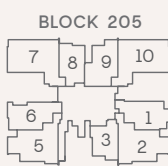
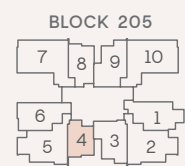
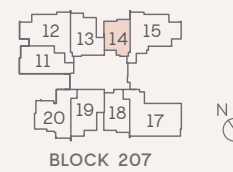
Unit #01-14



Block 205 Level 2 To 12  
Block 207 Level 3 To 12



Block 205 Level 1  
Block 207 Level 1 To 2



Unit Plans Disclaimer: Areas include A/C ledges, balconies, private enclosed spaces, private roof terraces and strata void areas where applicable. Areas are estimates only and are subject to final survey. Plans are not to scale and subject to changes as may be required or approved by the relevant authorities. Plans do not form part of the Sales and Purchase Agreement.

1-BEDROOM PREMIUM

**TYPE 1B**

Area 48 sqm / 517 sqft

**BLOCK 205**

Unit #02-08 to #12-08

**BLOCK 207**

Unit #02-18 to #12-18

**TYPE 1Bp**

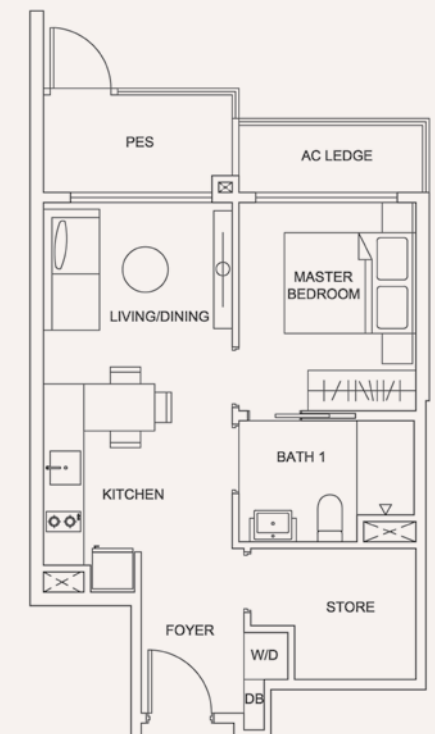
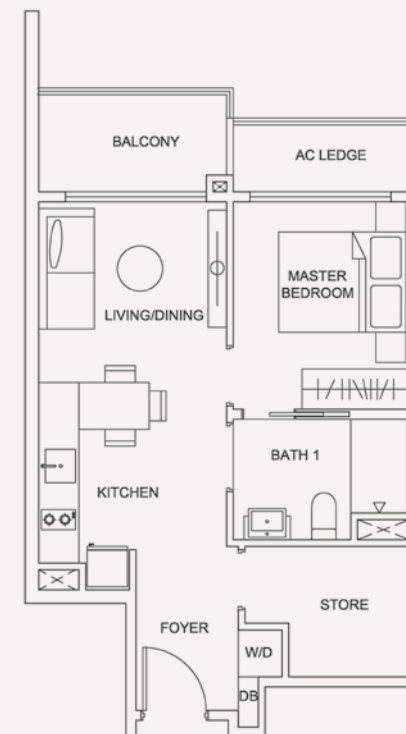
Area 48 sqm / 517 sqft

**BLOCK 205**

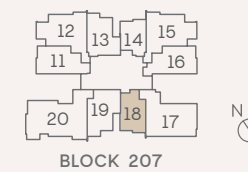
Unit #01-08

**BLOCK 207**

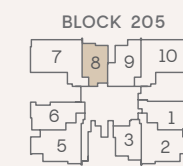
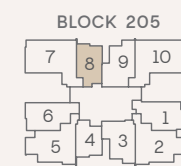
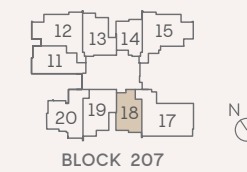
Unit #01-18



Block 205 Level 2 To 12  
Block 207 Level 3 To 12



Block 205 Level 1  
Block 207 Level 1 To 2

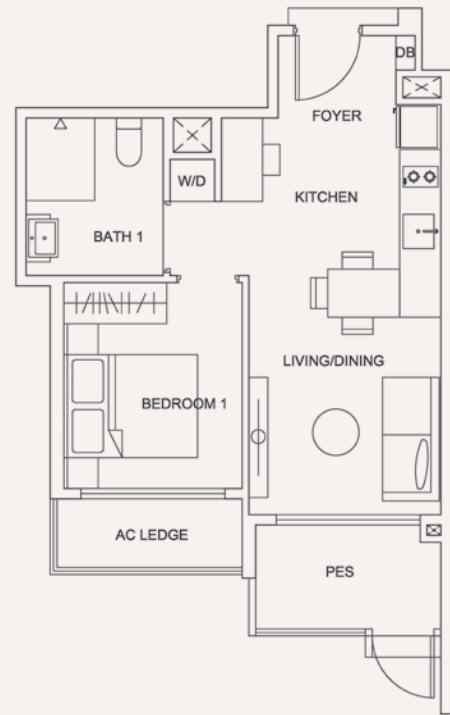


Unit Plans Disclaimer: Areas include A/C ledges, balconies, private enclosed spaces, private roof terraces and strata void areas where applicable. Areas are estimates only and are subject to final survey. Plans are not to scale and subject to changes as may be required or approved by the relevant authorities. Plans do not form part of the Sales and Purchase Agreement.

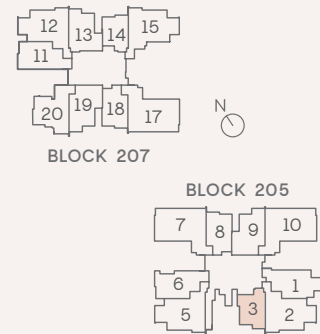
1-BEDROOM PREMIUM

**TYPE 1Cp**  
Area 45 sqm / 484 sqft

BLOCK 205  
Unit #01-03

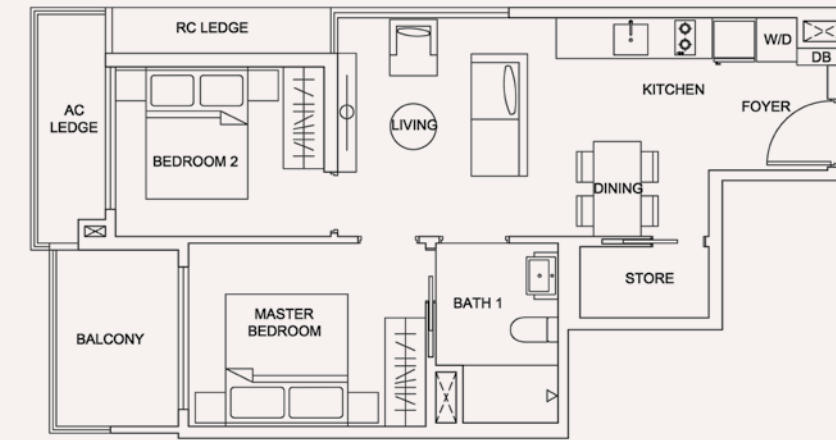


Block 205 Level 1  
Block 207 Level 1 To 2



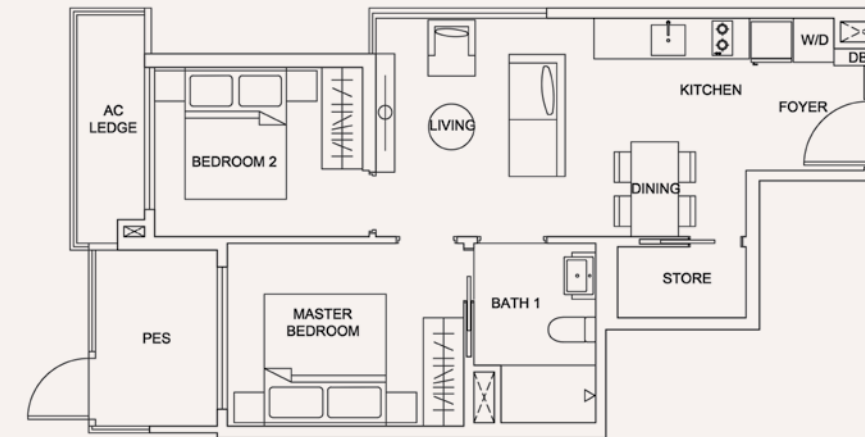
Unit Plans Disclaimer: Areas include A/C ledges, balconies, private enclosed spaces, private roof terraces and strata void areas where applicable. Areas are estimates only and are subject to final survey. Plans are not to scale and subject to changes as may be required or approved by the relevant authorities. Plans do not form part of the Sales and Purchase Agreement.

2-BEDROOM COMPACT



**TYPE 2A**  
Area 60 sqm / 646 sqft

BLOCK 205  
Unit #02-06 to #12-06

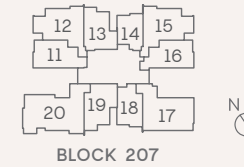


**TYPE 2AP**  
Area 60 sqm / 646 sqft

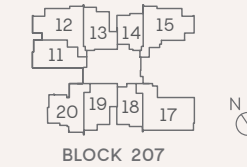
BLOCK 205  
Unit #01-06

BLOCK 207  
Unit #01-11

Block 205 Level 2 To 12  
Block 207 Level 3 To 12



Block 205 Level 1  
Block 207 Level 1 To 2



Unit Plans Disclaimer: Areas include A/C ledges, balconies, private enclosed spaces, private roof terraces and strata void areas where applicable. Areas are estimates only and are subject to final survey. Plans are not to scale and subject to changes as may be required or approved by the relevant authorities. Plans do not form part of the Sales and Purchase Agreement.

2-BEDROOM COMPACT

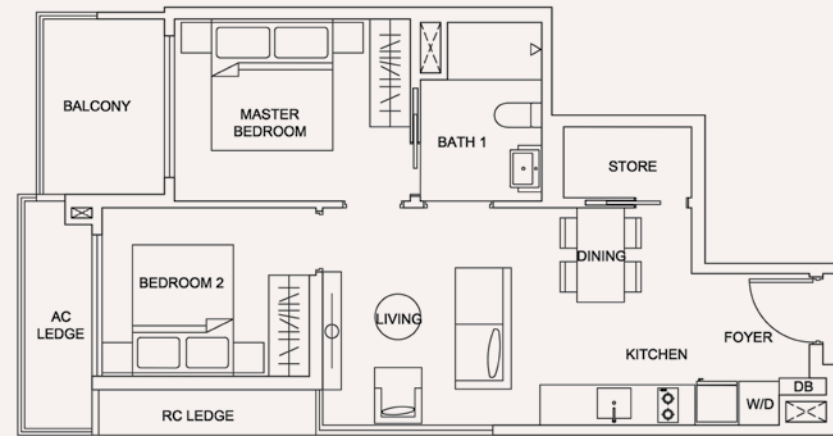
2-BEDROOM COMPACT

TYPE 2A (m)

Area 60 sqm / 646 sqft

BLOCK 207

Unit #02-11 to #12-11

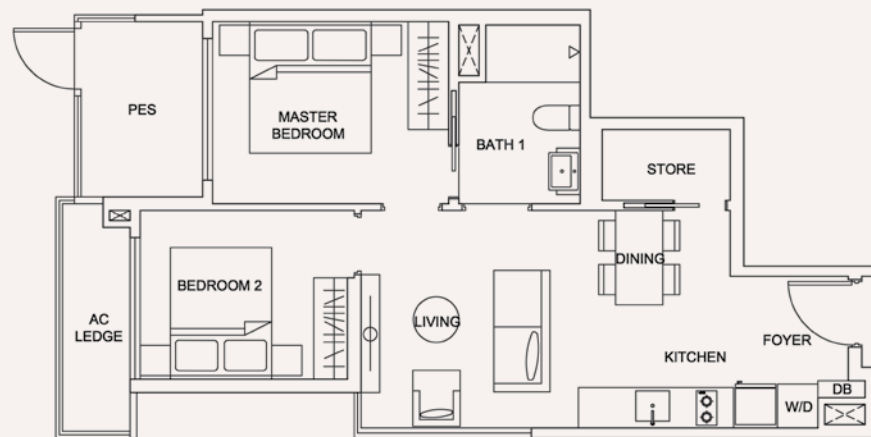


TYPE 2Ap (m)

Area 60 sqm / 646 sqft

BLOCK 207

Unit #01-11



TYPE 2B

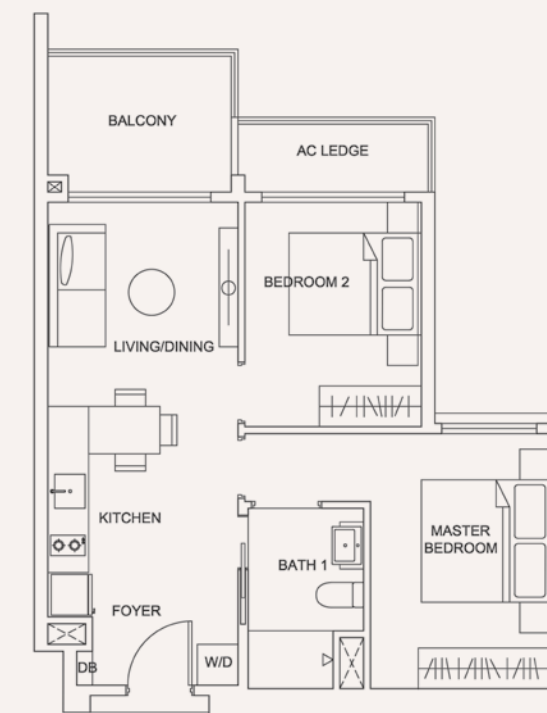
Area 58 sqm / 624 sqft

BLOCK 205

Unit #02-03 to #12-03

BLOCK 207

Unit #02-13 to #12-13

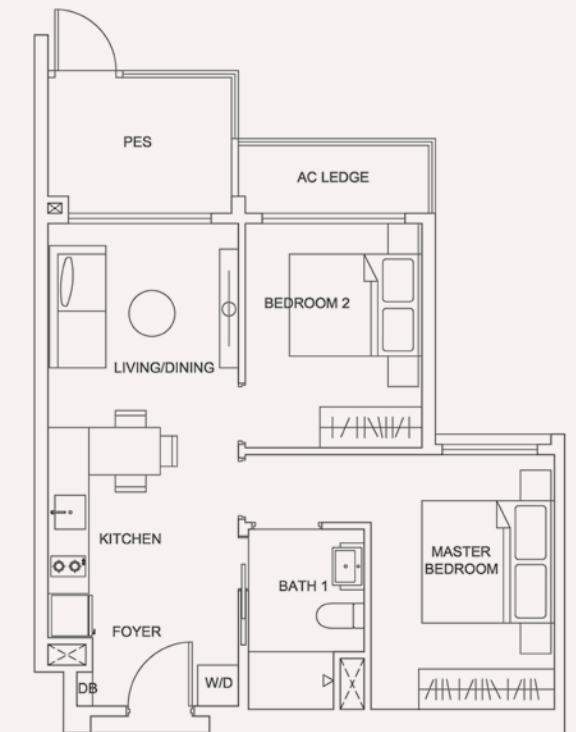


TYPE 2Bp

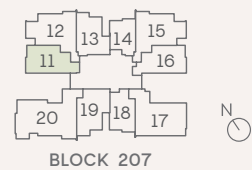
Area 58 sqm / 624 sqft

BLOCK 207

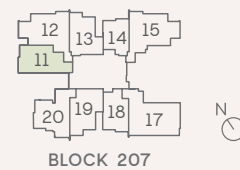
Unit #01-13



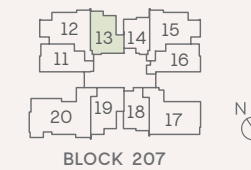
Block 205 Level 2 To 12  
Block 207 Level 3 To 12



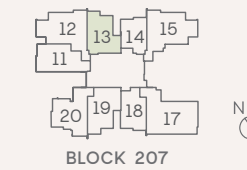
Block 205 Level 1  
Block 207 Level 1 To 2



Block 205 Level 2 To 12  
Block 207 Level 3 To 12



Block 205 Level 1  
Block 207 Level 1 To 2



Unit Plans Disclaimer: Areas include A/C ledges, balconies, private enclosed spaces, private roof terraces and strata void areas where applicable. Areas are estimates only and are subject to final survey. Plans are not to scale and subject to changes as may be required or approved by the relevant authorities. Plans do not form part of the Sales and Purchase Agreement.

Unit Plans Disclaimer: Areas include A/C ledges, balconies, private enclosed spaces, private roof terraces and strata void areas where applicable. Areas are estimates only and are subject to final survey. Plans are not to scale and subject to changes as may be required or approved by the relevant authorities. Plans do not form part of the Sales and Purchase Agreement.

2-BEDROOM COMPACT

**TYPE 2C**

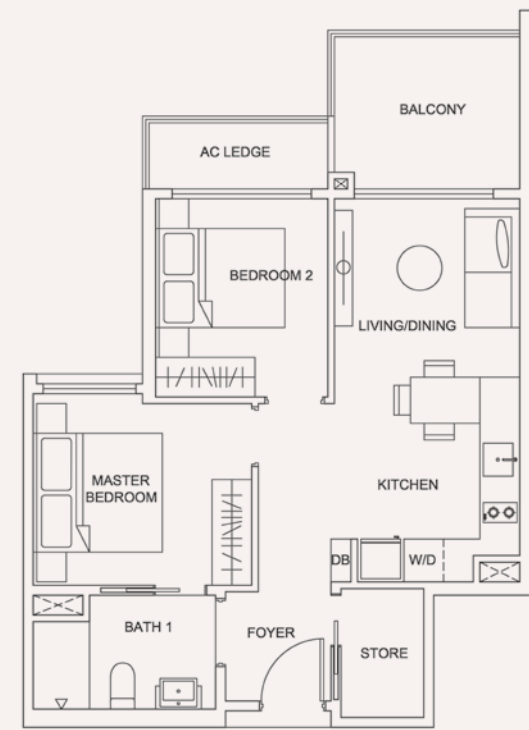
Area 61 sqm / 657 sqft

**BLOCK 205**

Unit #02-09 to #12-09

**BLOCK 207**

Unit #02-19 to #12-19



**TYPE 2Cp**

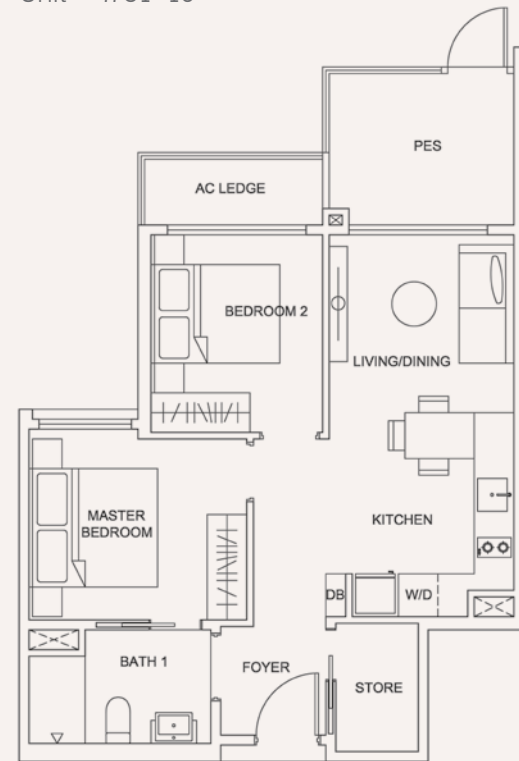
Area 61 sqm / 657 sqft

**BLOCK 205**

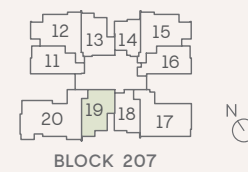
Unit #01-09

**BLOCK 207**

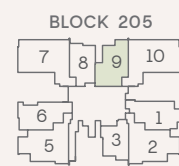
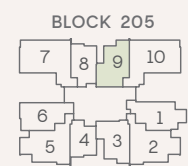
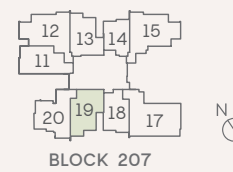
Unit #01-19



Block 205 Level 2 To 12  
Block 207 Level 3 To 12



Block 205 Level 1  
Block 207 Level 1 To 2



Unit Plans Disclaimer: Areas include A/C ledges, balconies, private enclosed spaces, private roof terraces and strata void areas where applicable. Areas are estimates only and are subject to final survey. Plans are not to scale and subject to changes as may be required or approved by the relevant authorities. Plans do not form part of the Sales and Purchase Agreement.

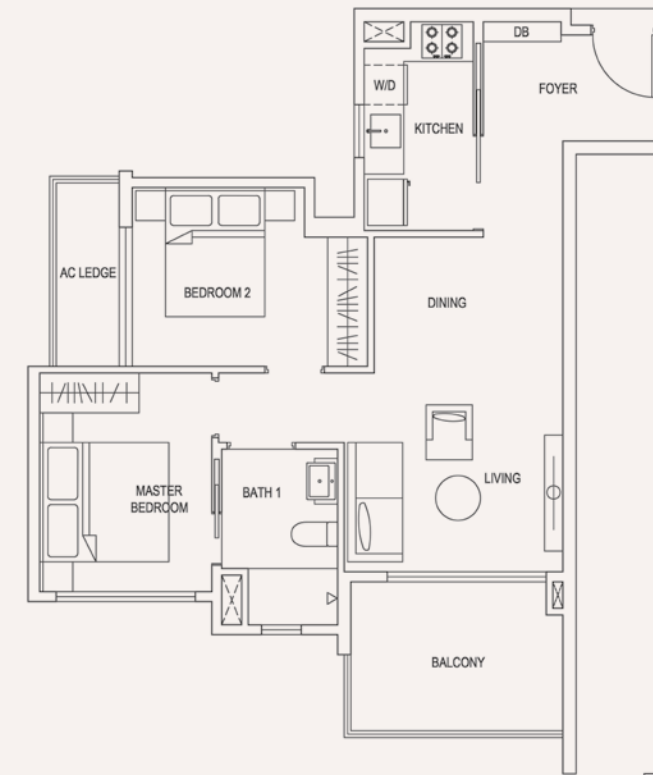
2-BEDROOM STANDARD

**TYPE 2D**

Area 67 sqm / 721 sqft

**BLOCK 207**

Unit #02-20

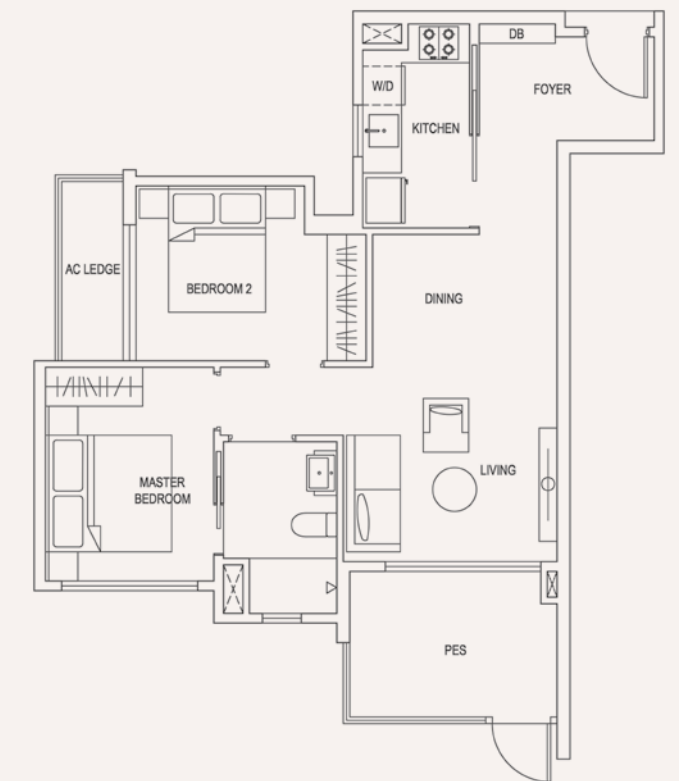


**TYPE 2Dp**

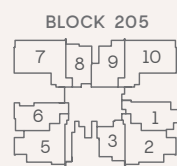
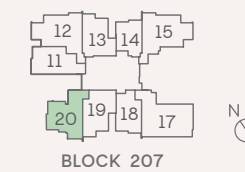
Area 67 sqm / 721 sqft

**BLOCK 207**

Unit #01-20



Block 205 Level 1  
Block 207 Level 1 To 2



Unit Plans Disclaimer: Areas include A/C ledges, balconies, private enclosed spaces, private roof terraces and strata void areas where applicable. Areas are estimates only and are subject to final survey. Plans are not to scale and subject to changes as may be required or approved by the relevant authorities. Plans do not form part of the Sales and Purchase Agreement.

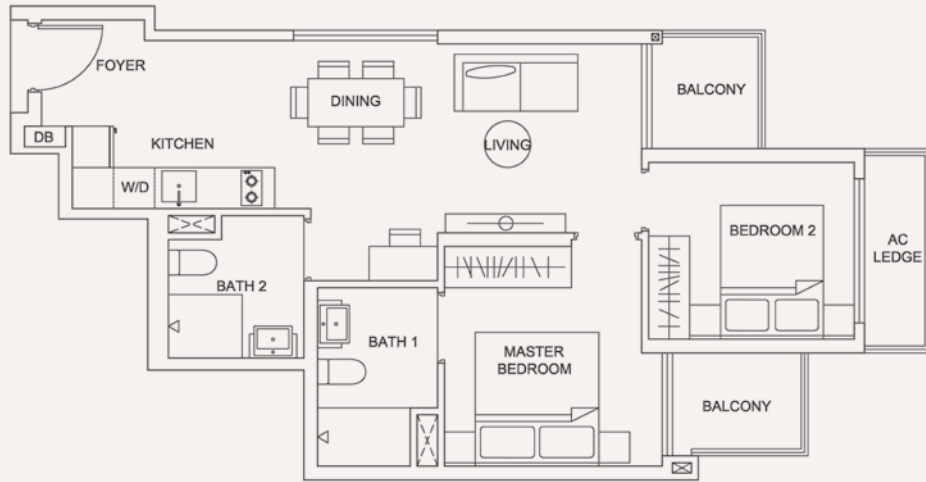
2-BEDROOM STANDARD

**TYPE 2E**

Area 60 sqm / 646 sqft

**BLOCK 205**

Unit #02-01 to #12-01

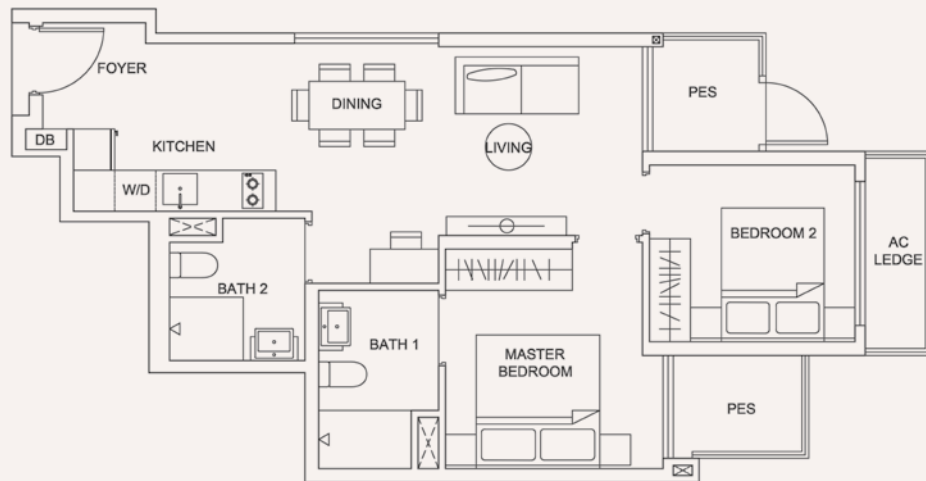


**TYPE 2Ep**

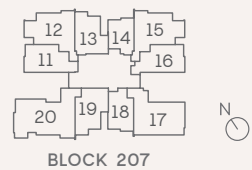
Area 60 sqm / 646 sqft

**BLOCK 205**

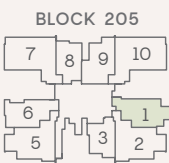
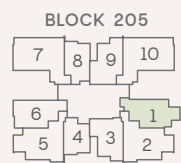
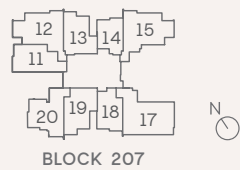
Unit #01-01



Block 205 Level 2 To 12  
Block 207 Level 3 To 12



Block 205 Level 1  
Block 207 Level 1 To 2



Unit Plans Disclaimer: Areas include A/C ledges, balconies, private enclosed spaces, private roof terraces and strata void areas where applicable. Areas are estimates only and are subject to final survey. Plans are not to scale and subject to changes as may be required or approved by the relevant authorities. Plans do not form part of the Sales and Purchase Agreement.

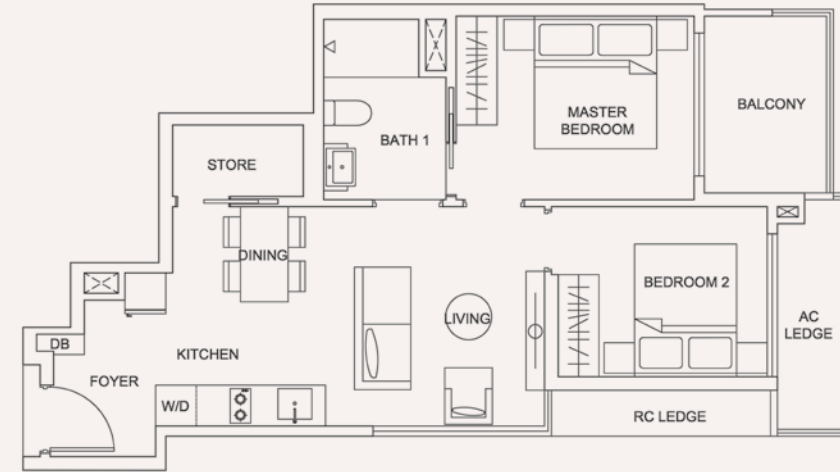
2-BEDROOM STANDARD

**TYPE 2F**

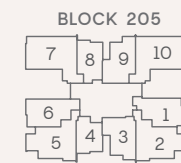
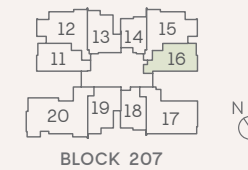
Area 60 sqm / 646 sqft

**BLOCK 207**

Unit #03-16 to #12-16



Block 205 Level 2 To 12  
Block 207 Level 3 To 12



Unit Plans Disclaimer: Areas include A/C ledges, balconies, private enclosed spaces, private roof terraces and strata void areas where applicable. Areas are estimates only and are subject to final survey. Plans are not to scale and subject to changes as may be required or approved by the relevant authorities. Plans do not form part of the Sales and Purchase Agreement.

3-BEDROOM COMPACT

**TYPE 3A**

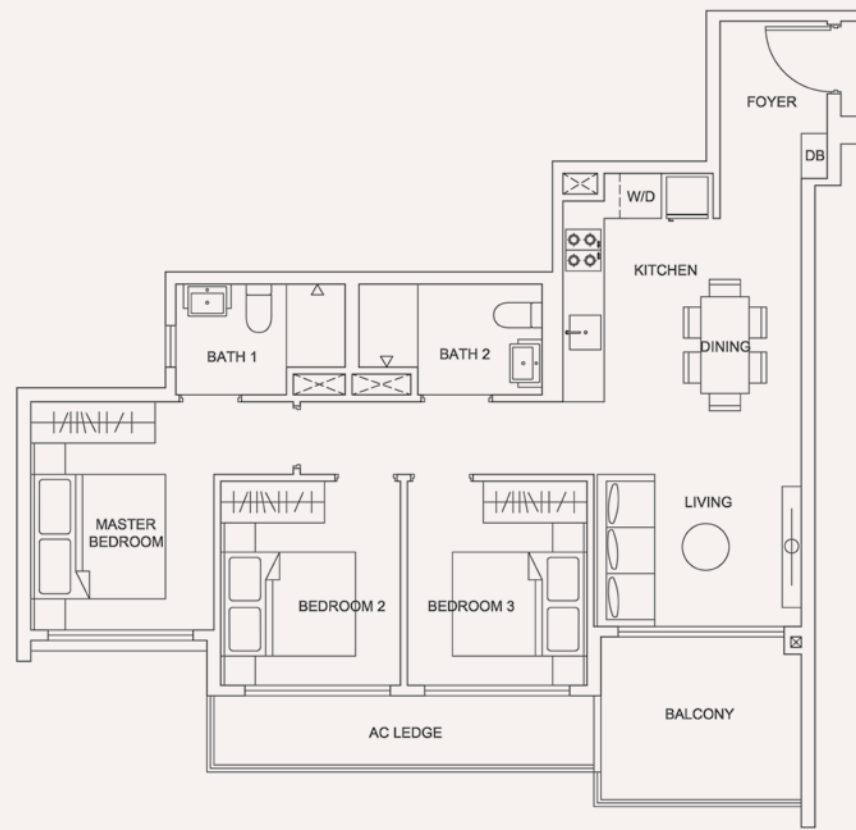
Area 82 sqm / 883 sqft

**BLOCK 205**

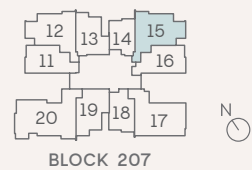
Unit #02-05 to #12-05

**BLOCK 207**

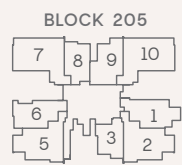
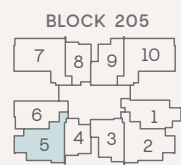
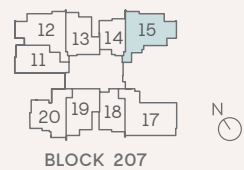
Unit #02-15 to #12-15



Block 205 Level 2 To 12  
Block 207 Level 3 To 12



Block 205 Level 1  
Block 207 Level 1 To 2



Unit Plans Disclaimer: Areas include A/C ledges, balconies, private enclosed spaces, private roof terraces and strata void areas where applicable. Areas are estimates only and are subject to final survey. Plans are not to scale and subject to changes as may be required or approved by the relevant authorities. Plans do not form part of the Sales and Purchase Agreement.

3-BEDROOM COMPACT

**TYPE 3Ap**

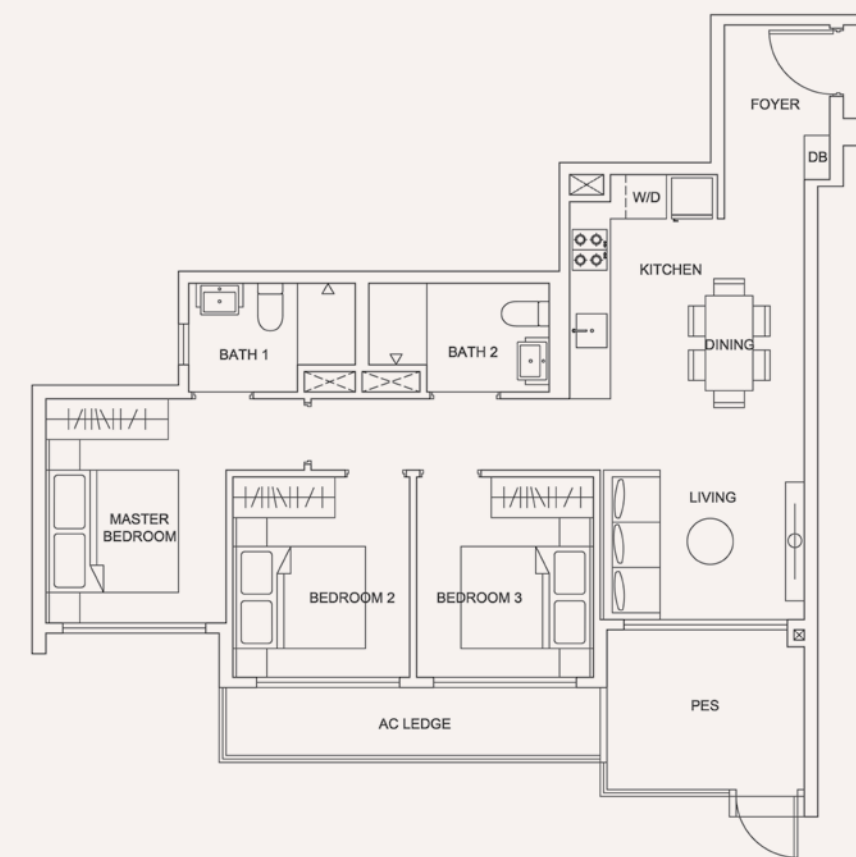
Area 82 sqm / 883 sqft

**BLOCK 205**

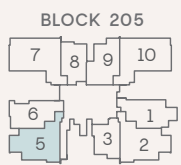
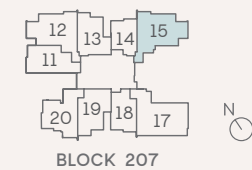
Unit #01-05

**BLOCK 207**

Unit #01-15



Block 205 Level 1  
Block 207 Level 1 To 2



Unit Plans Disclaimer: Areas include A/C ledges, balconies, private enclosed spaces, private roof terraces and strata void areas where applicable. Areas are estimates only and are subject to final survey. Plans are not to scale and subject to changes as may be required or approved by the relevant authorities. Plans do not form part of the Sales and Purchase Agreement.

3-BEDROOM COMPACT

**TYPE 3A (m)**

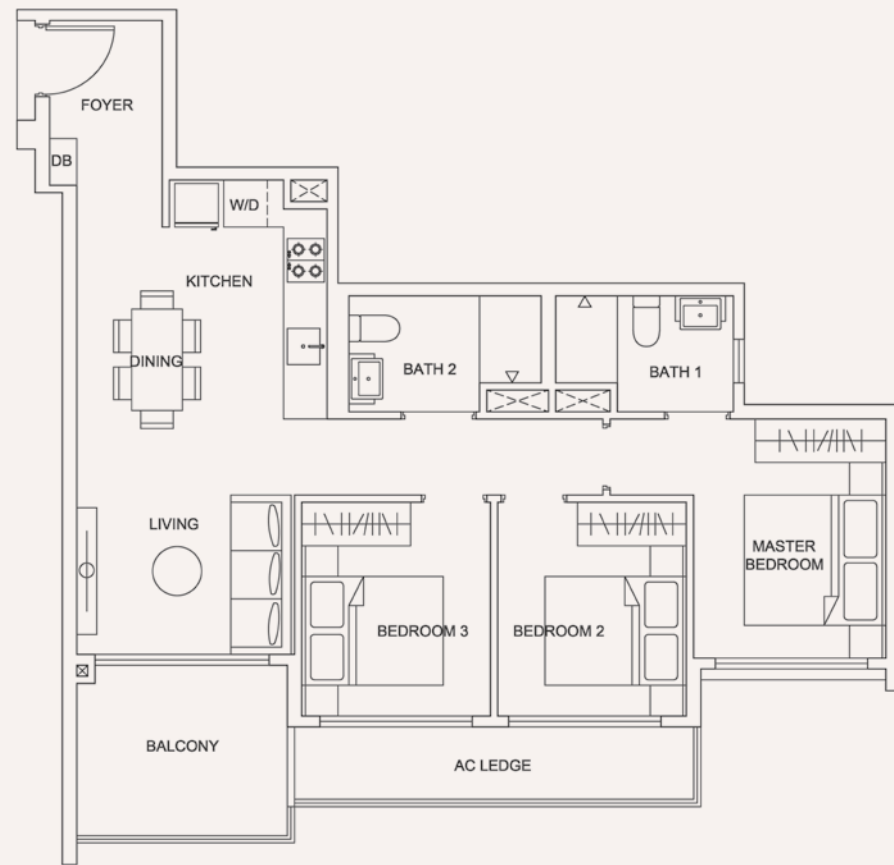
Area 82 sqm / 883 sqft

**BLOCK 205**

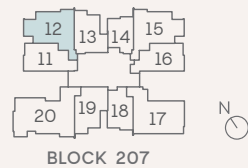
Unit #02-02 to #12-02

**BLOCK 207**

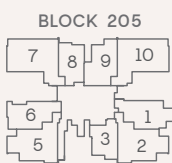
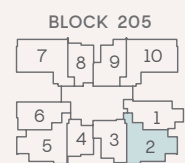
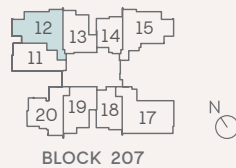
Unit #02-12 to #12-12



Block 205 Level 2 To 12  
Block 207 Level 3 To 12



Block 205 Level 1  
Block 207 Level 1 To 2



Unit Plans Disclaimer: Areas include A/C ledges, balconies, private enclosed spaces, private roof terraces and strata void areas where applicable. Areas are estimates only and are subject to final survey. Plans are not to scale and subject to changes as may be required or approved by the relevant authorities. Plans do not form part of the Sales and Purchase Agreement.

3-BEDROOM COMPACT

**TYPE 3Ap (m)**

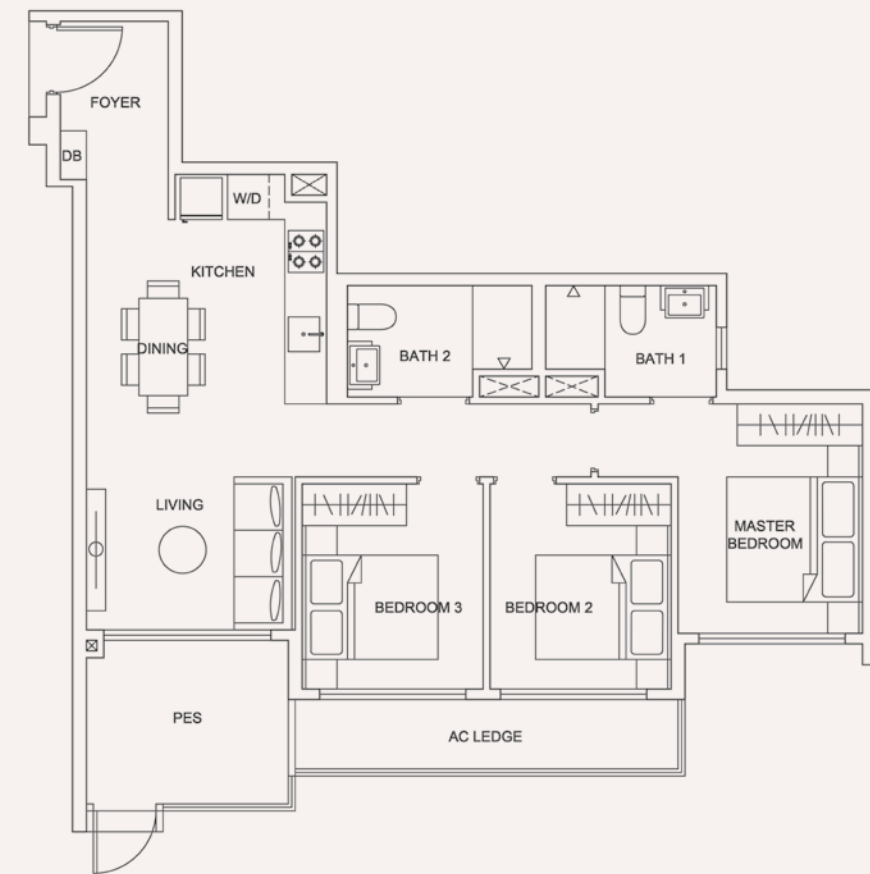
Area 82 sqm / 883 sqft

**BLOCK 205**

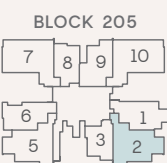
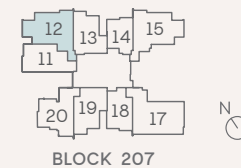
Unit #01-02

**BLOCK 207**

Unit #01-12



Block 205 Level 1  
Block 207 Level 1 To 2



Unit Plans Disclaimer: Areas include A/C ledges, balconies, private enclosed spaces, private roof terraces and strata void areas where applicable. Areas are estimates only and are subject to final survey. Plans are not to scale and subject to changes as may be required or approved by the relevant authorities. Plans do not form part of the Sales and Purchase Agreement.

3-BEDROOM COMPACT

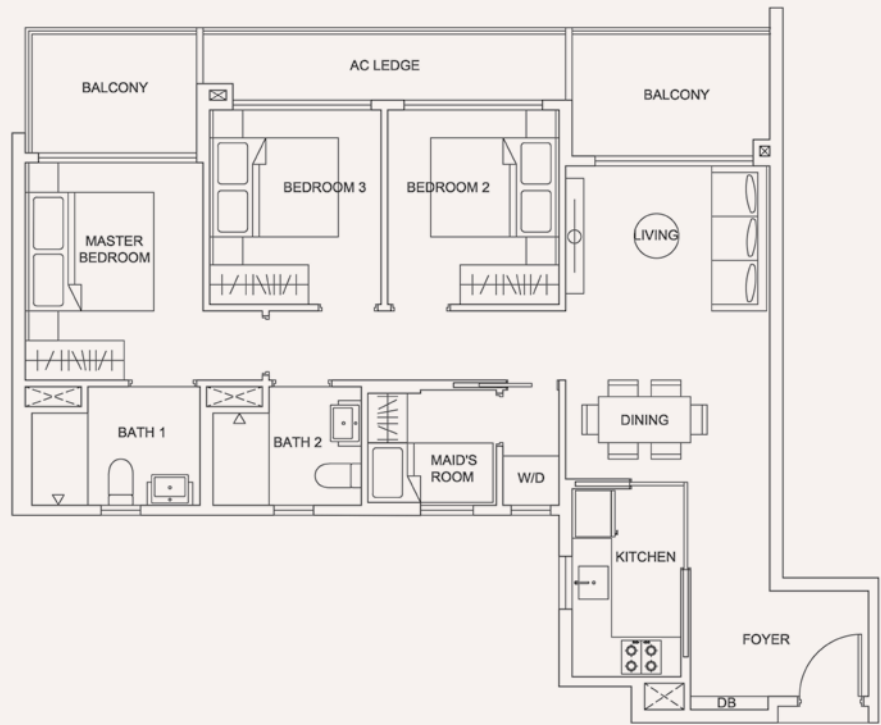
**TYPE 3B**

Area 94 sqm / 1,012 sqft

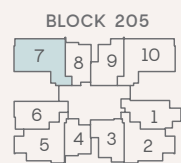
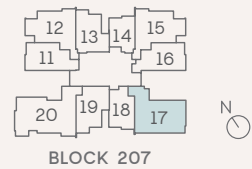
**BLOCK 205**

Unit #02-07 to #12-07

Unit #02-10 to #12-10



Block 205 Level 2 To 12  
Block 207 Level 3 To 12



Unit Plans Disclaimer: Areas include A/C ledges, balconies, private enclosed spaces, private roof terraces and strata void areas where applicable. Areas are estimates only and are subject to final survey. Plans are not to scale and subject to changes as may be required or approved by the relevant authorities. Plans do not form part of the Sales and Purchase Agreement.

3-BEDROOM COMPACT

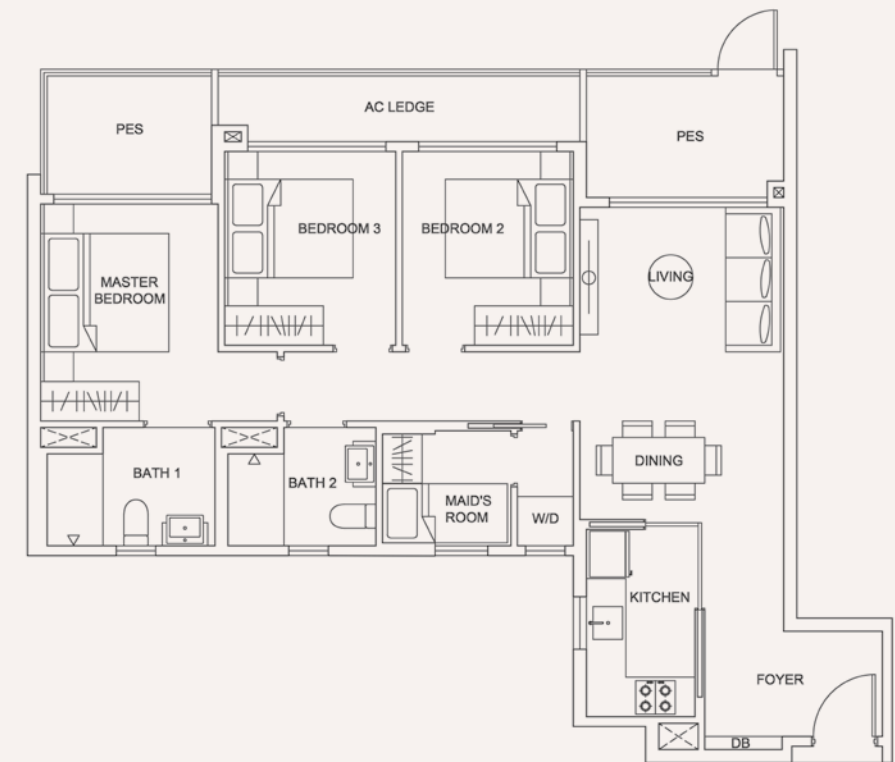
**TYPE 3Bp**

Area 94 sqm / 1,012 sqft

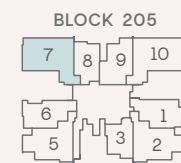
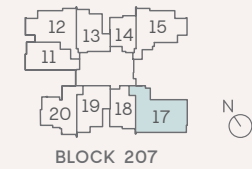
**BLOCK 205**

Unit #01-07

Unit #01-10



Block 205 Level 1  
Block 207 Level 1 To 2



Unit Plans Disclaimer: Areas include A/C ledges, balconies, private enclosed spaces, private roof terraces and strata void areas where applicable. Areas are estimates only and are subject to final survey. Plans are not to scale and subject to changes as may be required or approved by the relevant authorities. Plans do not form part of the Sales and Purchase Agreement.



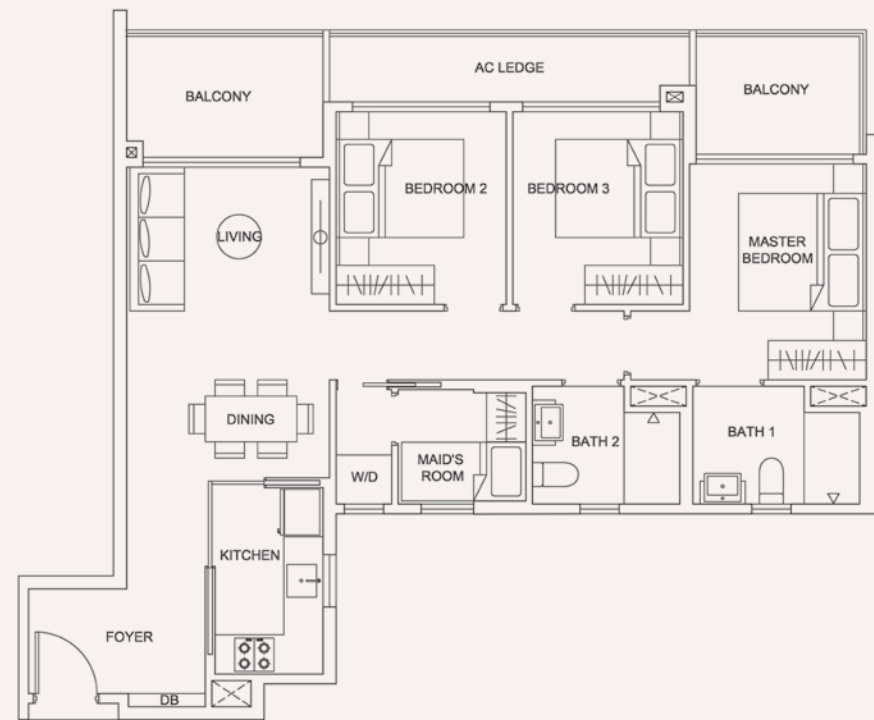
3-BEDROOM COMPACT

TYPE 3B (m)

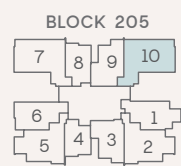
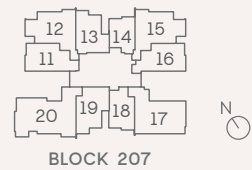
Area 94 sqm / 1,012 sqft

BLOCK 205

Unit #02-17 to #12-17



Block 205 Level 2 To 12  
Block 207 Level 3 To 12



Unit Plans Disclaimer: Areas include A/C ledges, balconies, private enclosed spaces, private roof terraces and strata void areas where applicable. Areas are estimates only and are subject to final survey. Plans are not to scale and subject to changes as may be required or approved by the relevant authorities. Plans do not form part of the Sales and Purchase Agreement.

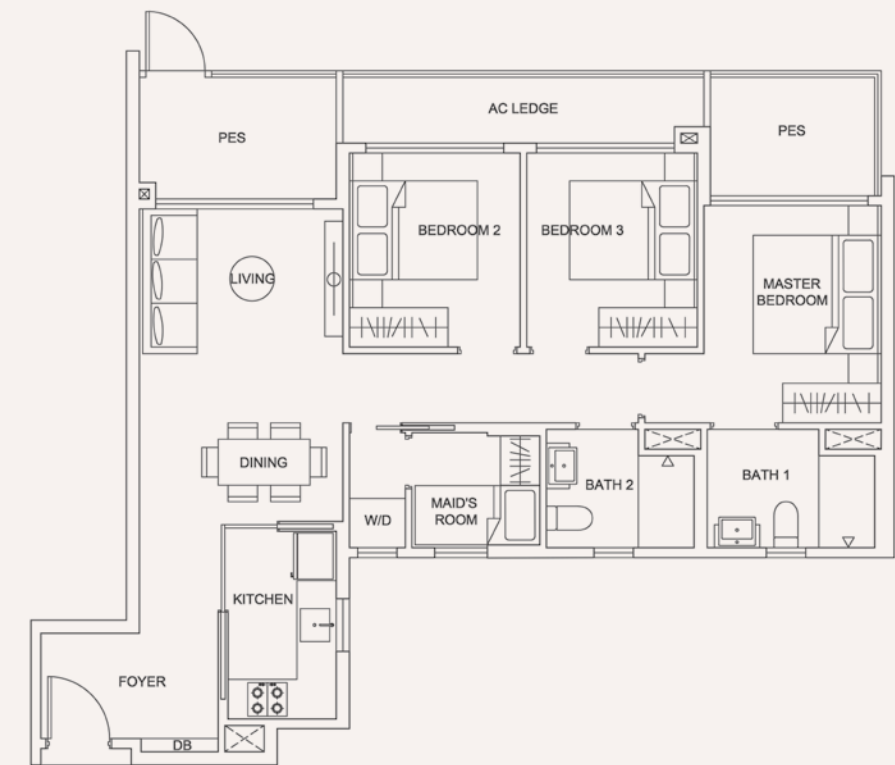
3-BEDROOM COMPACT

TYPE 3Bp (m)

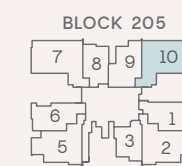
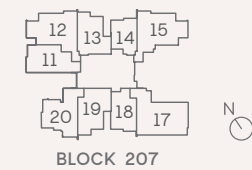
Area 94 sqm / 1,012 sqft

BLOCK 205

Unit #01-10



Block 205 Level 1  
Block 207 Level 1 To 2



Unit Plans Disclaimer: Areas include A/C ledges, balconies, private enclosed spaces, private roof terraces and strata void areas where applicable. Areas are estimates only and are subject to final survey. Plans are not to scale and subject to changes as may be required or approved by the relevant authorities. Plans do not form part of the Sales and Purchase Agreement.

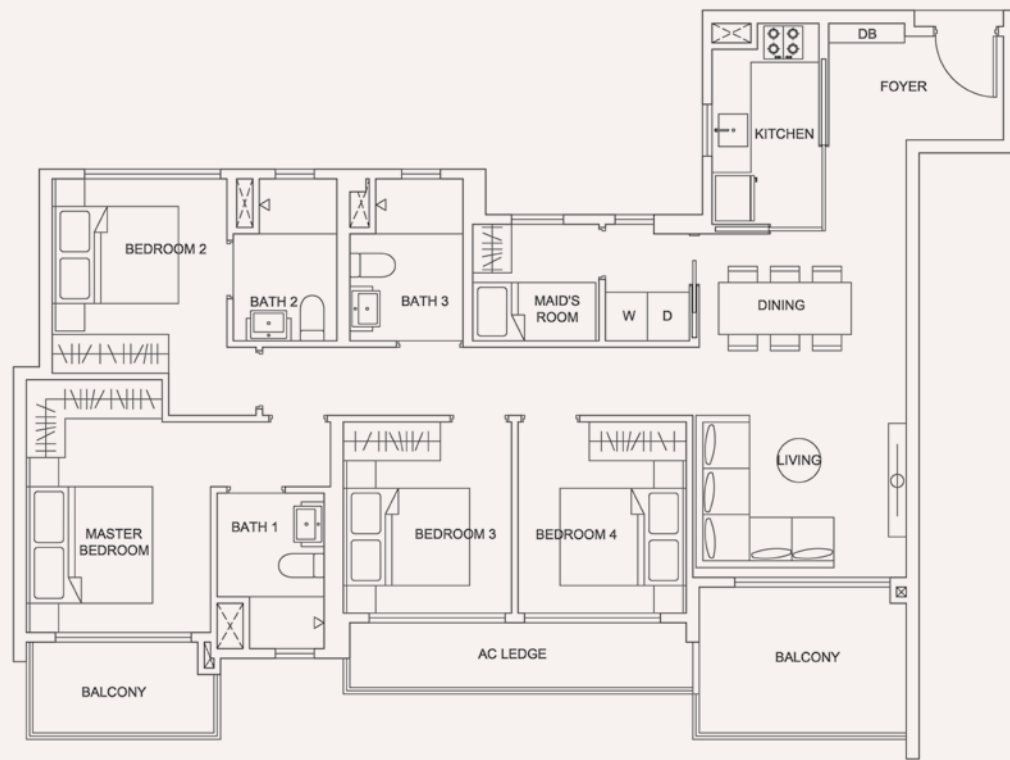
4-BEDROOM PREMIUM

TYPE 4A

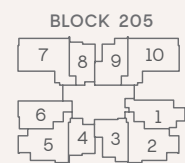
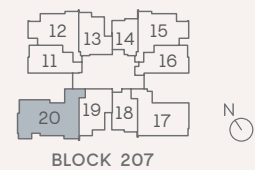
Area 118 sqm / 1,270 sqft

BLOCK 207

Unit #03-20 to #12-20



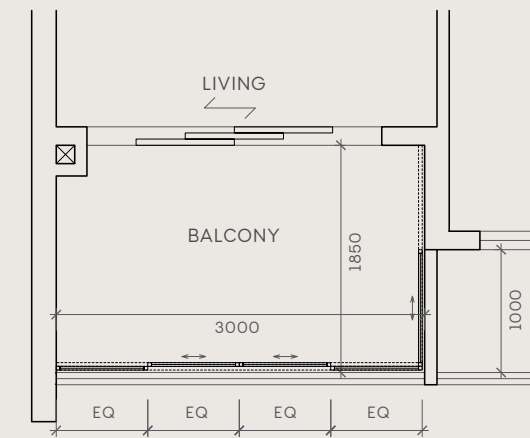
Block 205 Level 2 To 12  
Block 207 Level 3 To 12



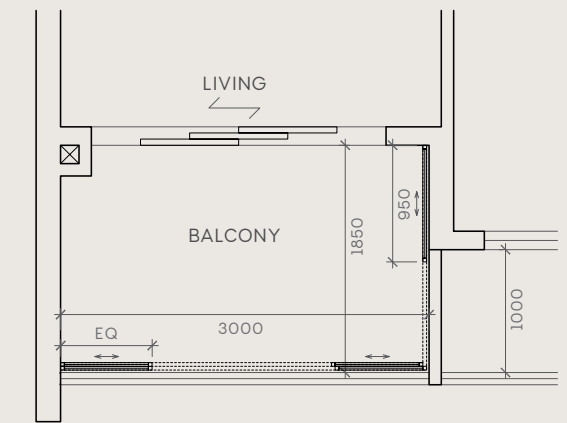
Unit Plans Disclaimer: Areas include A/C ledges, balconies, private enclosed spaces, private roof terraces and strata void areas where applicable. Areas are estimates only and are subject to final survey. Plans are not to scale and subject to changes as may be required or approved by the relevant authorities. Plans do not form part of the Sales and Purchase Agreement.

TYPICAL SLIDEABLE  
BALCONY SCREEN DETAIL

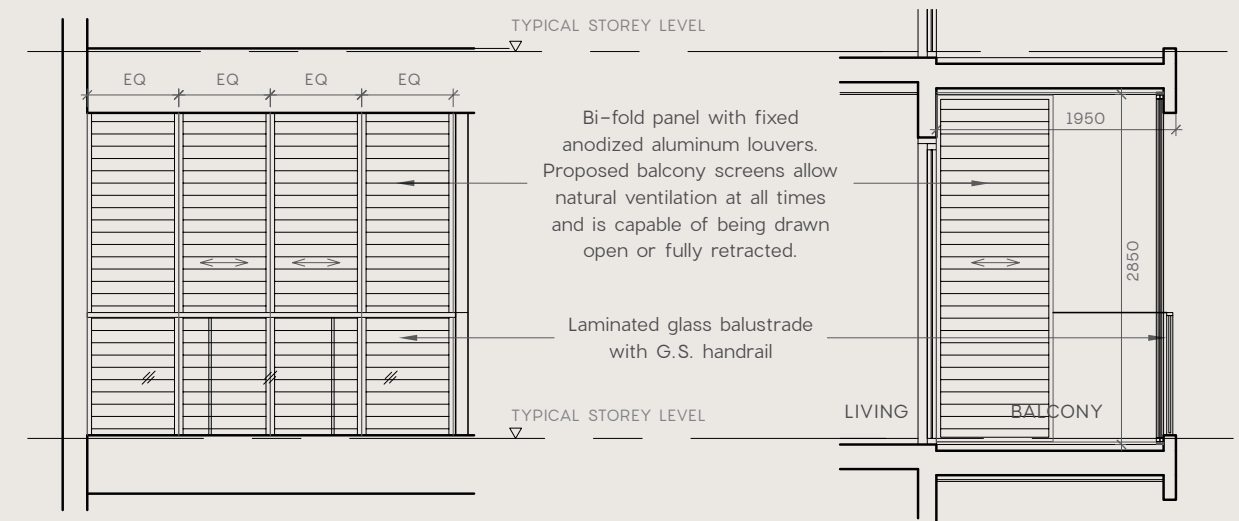
ANNEXURE 1



PLAN - FULLY CLOSED



PLAN - FULLY OPEN



FRONT ELEVATION

SECTION

Balcony Screen Disclaimer: Balconies shall not be enclosed unless with the approved balcony screen. The drawings below are not to scale and are a typical illustration for reference only. Actual profile of screens subject to manufacturer's detail. Purchasers may refer to the Management Corporation for additional details. Fixing detail to be drawn up by specialist contractor, and fixing shall not damage waterproofing or existing structures. The balcony screen will not be provided. The cost of the screen and installation shall be borne by the Purchaser. The proposed balcony screen allows natural ventilation within the balcony at all times (including times when the screen is fully closed) and is capable of being opened.